

## DESCRIPTION

The R-K FTV series float valve is designed to provide maximum efficiency in controlling the liquid level in storage tanks. They can be installed by using a tank adapter, directly through the tank wall or with simple piping over the top edge of the tank. After installation the float valve will automatically keep the tank as full as required by replacing liquids lost by drainage, evaporation or spillage with positive shut-off to prevent overfilling.

The reliability of the valve has been proven in thousands of installations using most acids, caustics, distilled and DI water.

## R-K FTV SERIES FLOAT VALVE



## KEY FEATURES

- Automatic level control - Designed to provide maximum efficiency in controlling liquid levels in storage tanks
- Prevents overflow - Automatically maintains desired tank level with positive shutoff
- Flexible installation - Can be installed using tank adapter through wall or simple piping over tank edge
- Long-life sealing - Dynamic seal o-rings are teflon encapsulated viton for extended operation
- Trouble-free operation - Proven reliability in thousands of installations
- Chemical compatibility - Suitable for acids, caustics, plating solutions, clean and waste water

## VALVE BODY MATERIALS:

- Type 1 – Grade 1 PVC
- Natural Polypropylene (PP)
- PVDF (Polyvinylidene Fluoride)

### SEAL

- EPDM
- VITON
- KALREZ

**Dynamic Seal:** Teflon encapsulated Viton

## SIZES & PORTING

**Valve Sizes:** ¼", ½", ¾", 1.0", 1.5", 2.0", 3.0", 4.0"

### Port Types:

¼" to 1" Valve FNPT,  
1.5" to 4" Valve MPT  
(all fully ported).

**Mounting:** (4) ¼"-20 tapped holes for standard machined valve body (¼" to 1.00")



## PRESSURE & TEMPERATURE RATINGS:

**Operating Pressure:**  
0 to 80 PSIG.

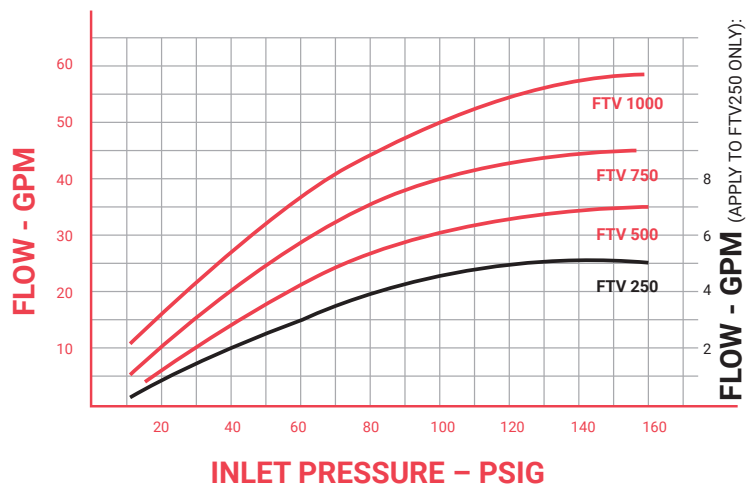
### Temperature Range

- 0°F to 140°F for PVC
- 0°F to 180°F for POLYPRO
- 0°F to 260°F for PVDF
- 0°F to 340°F for TEFLON

## ENGINEERING & PERFORMANCE DATA

**Float:** Molded Polypropylene  
(1/2", 3/4", 1" sizes) expanded polyethylene  
(1/4", 1-1/2", 2", 3", 4" size)

**INLET PRESSURE – PSIG** (APPLY TO FTV250 ONLY):



The chart below will specify R - K standard valves regarding valve size, valve material, and seal material.  
For special orders, please consult the factory for pricing and delivery information.

### FTV - X X X - X

#### VALVE SIZE

25 = 1/4"  
50 = 1/2"  
75 = 3/4"  
100 = 1.0"  
150 = 1.5"  
200 = 2.0"  
300 = 3.0"  
400 = 4.0"

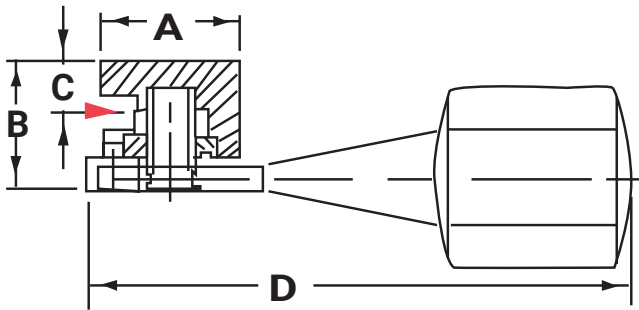
#### MATERIAL

1 = PVC  
2 = POLYPRO  
3 = PVDF  
5 = OTHER (Please specify)

#### SEALS

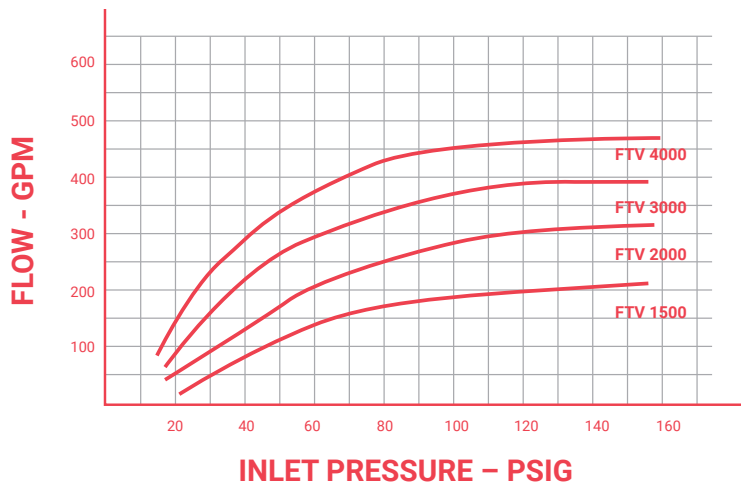
E = EPDM  
V = VITON  
K = KALREZ  
O = OTHER (Please specify)

# ENGINEERING & PERFORMANCE DATA



## NOTES

- The performance curves show the flow rate gpm valves at its fully open position. These curves can be varied by changing the float position. The pressure characteristic of each system and at each different pressure setting point.
- Test data was performed with 68°F water, and 150 PSIG maximum pressure.
- These performance curves will be changed with higher viscosity liquid and or higher temperature.
- Consult your local sales rep or hayward industries corp for custom products or special applications.



## DIMENSIONAL DATA

DIMENSIONS IN INCHES

Valve Size	Ports	A	B	C	D	Cv
1/4"	FNPT	2	3.2	0.4	10	0.82
1/2"	FNPT	3	4.2	0.6	12	3.46
3/4"	FNPT	3.5	5	0.8	13.5	4.42
1.0"	FNPT	3.5	5	0.8	13.5	5.86
1.5"	MPT	4	4.8	1.7	18	18.2*
2.0"	MPT	4	4.8	1.7	18	25.4*
3.0"	MPT	4.5	6.5	2.5	22	30.6*
4.0"	MPT	5	7.3	3.3	24	35.8*

(\*) Cv value @ 150 GPM